



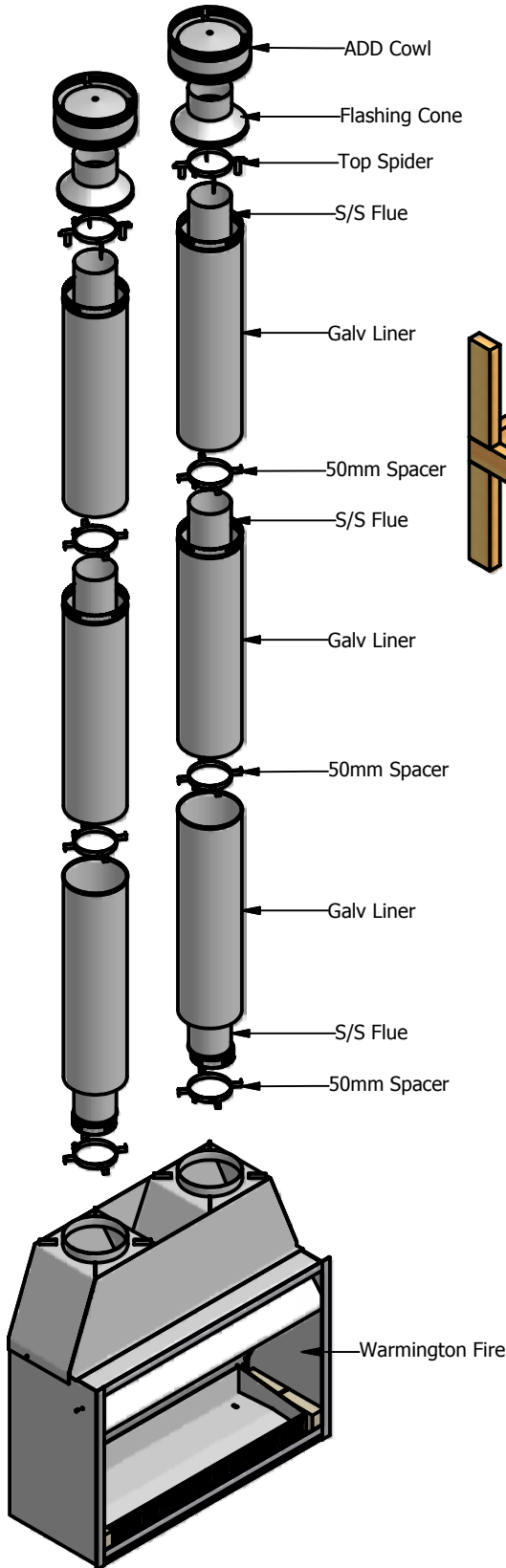
Industries 1994 LTD  
 PO Box 58652 Greenmount, Auckland  
 www.warmington.co.nz

Due to continued product improvement, Warmington Ind LTD reserves the right to change product specification without prior notification

## Wood Flue Pipe System

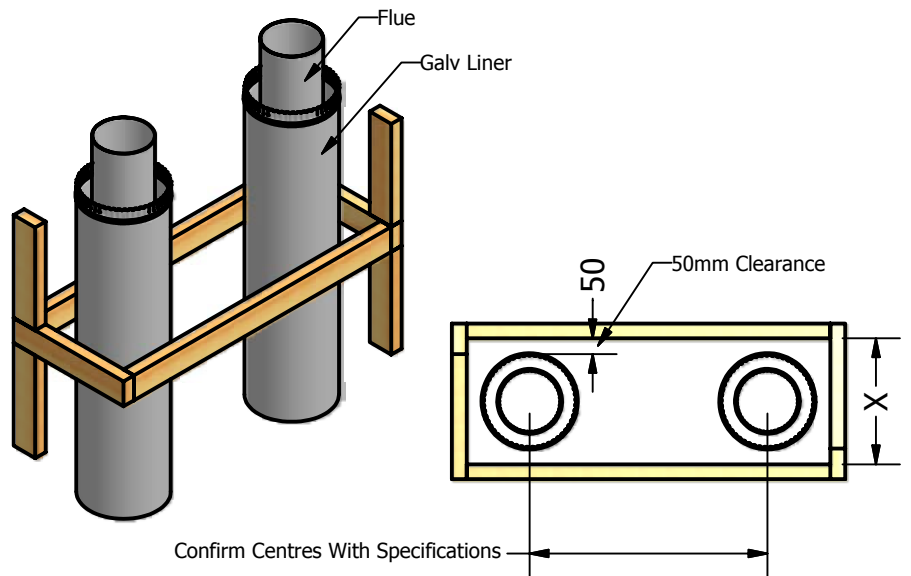
### 3.6 Meter Twin Flue Kit

Tested in accordance with & Must Comply with  
 ASNZS 2918:2001



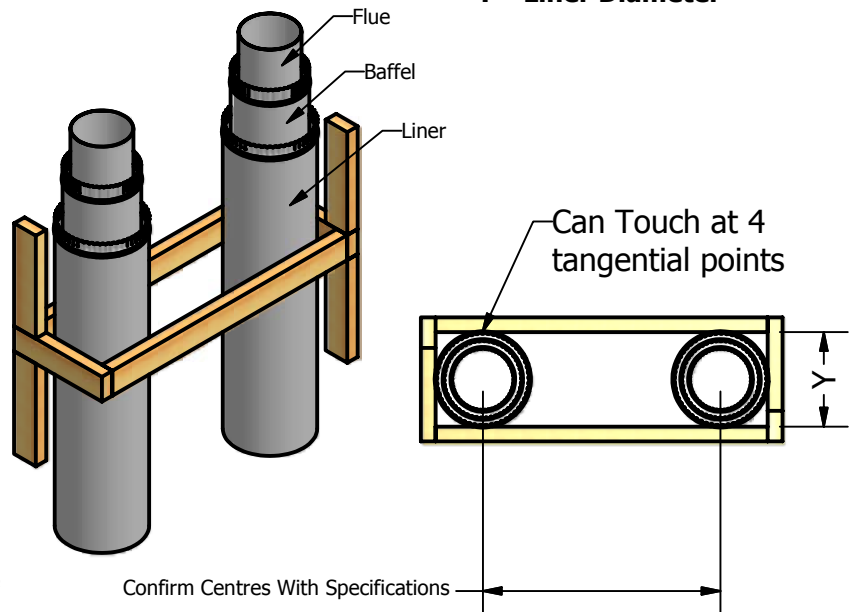
#### Option X - Frame Out Detail

$X = \text{Liner} + 100\text{mm}$



#### Option Y - Frame Out Detail

$Y = \text{Liner Diameter}$



Flue Dia	Test Report Number	Date
200	04/1039	20 July 04
250	04/1040	20 July 04
300	04/1041	20 July 04